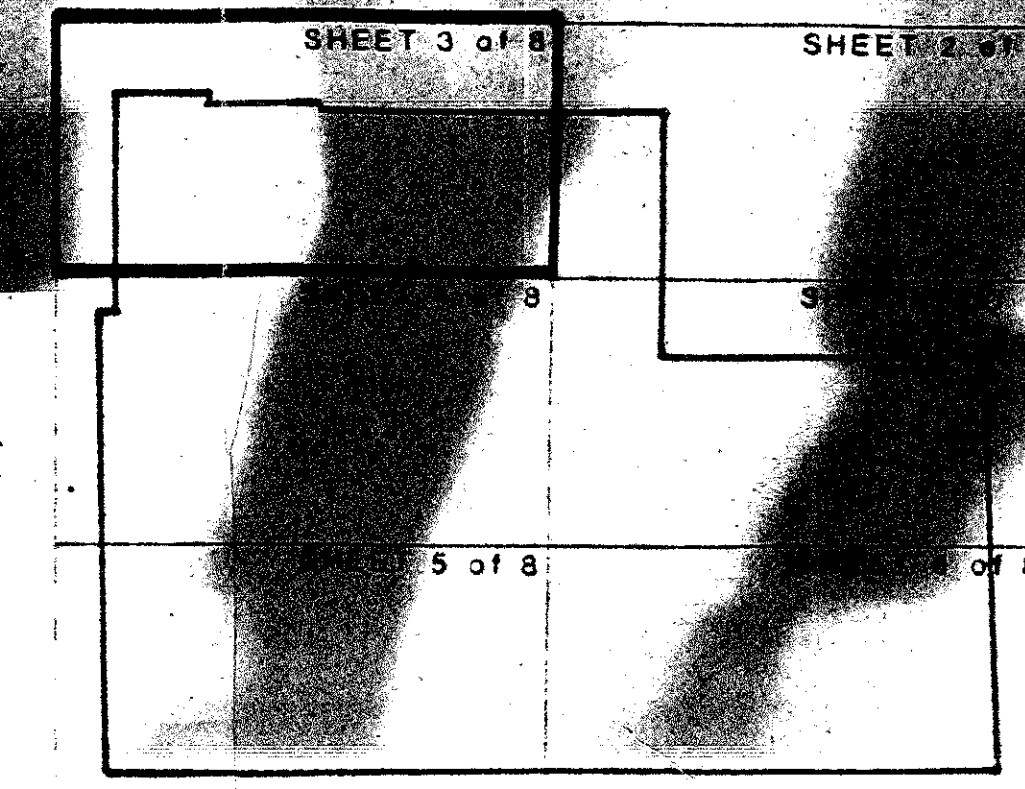


THE LEXINGTON CLUB

ALL OF HAMILTON PLACE - P.U.D.
 A RESUBDIVISION OF PINECREST PARK, P.B. #4 PAGE 11 AND A
 PORTION OF PALM BEACH FARMS COMPANY PLAT NO. 1 P.B.
 PAGES 26 THROUGH 28, PALM BEACH COUNTY RECORDS,
 LYING IN SECTION 21 TOWNSHIP 46 SOUTH RANGE 42 EAST
 PALM BEACH COUNTY, FLORIDA
 5 SHEETS SHEET NO. 3
 Post, Buckley, Schuh & Jernigan, Inc.
 CONSULTING ENGINEERS PLANNERS and SURVEYORS



STATE OF FLORIDA
 COUNTY OF PALM BEACH

THIS PLAN
 FOR RECORD
 THIS
 AND DEED
 PLAT

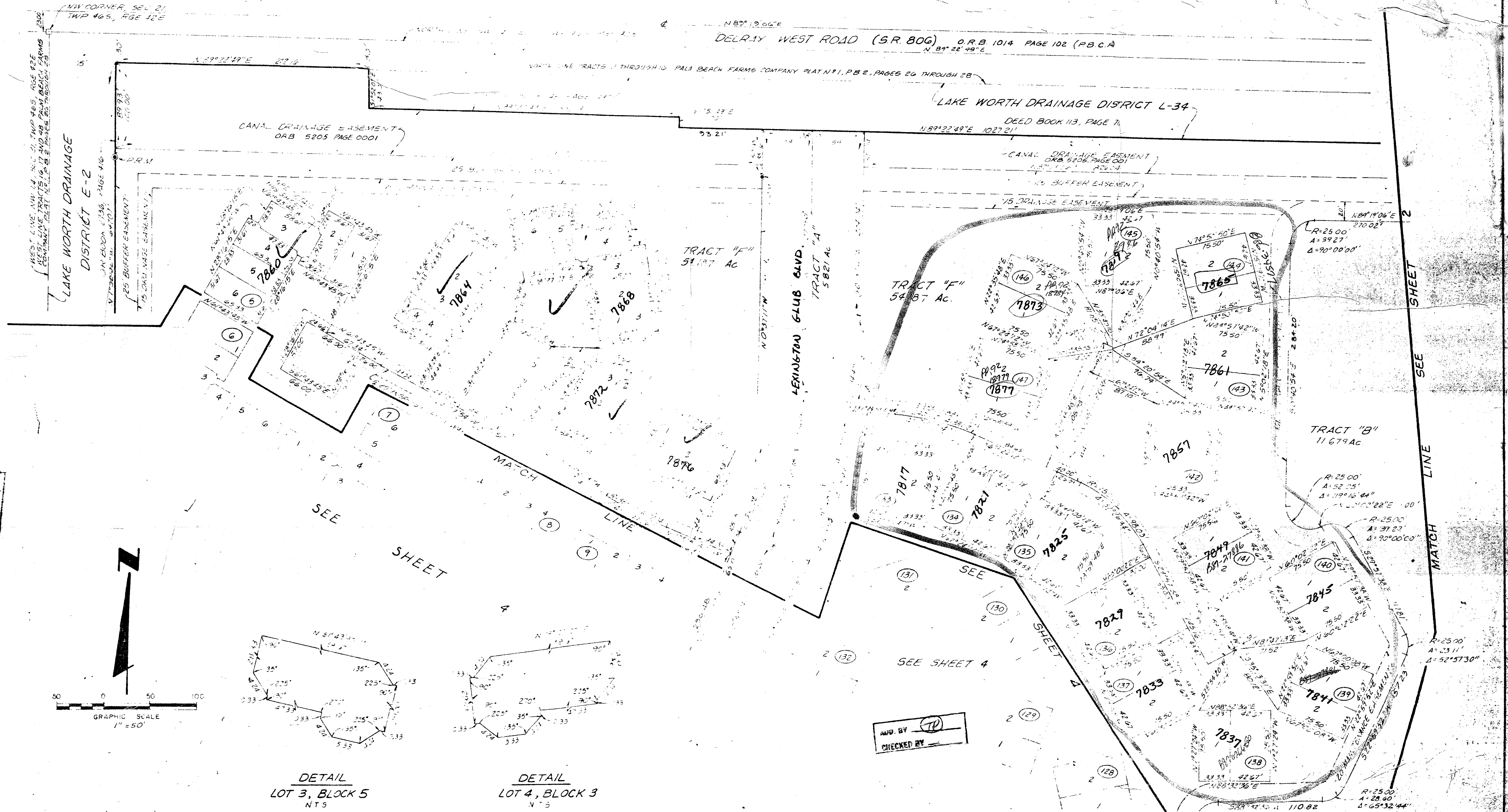
BY: _____ D.C.

94

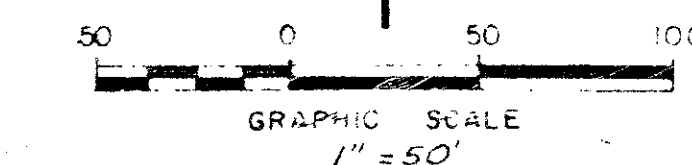
PBSJ

JANUARY 1987

KEY MAP



SUBDIVISION
 BOOK
 FLOOD ZONE
 ZONING
 ZIP CODE
 PUD NAME



DETAIL
 LOT 3, BLOCK 5
 N.T.S.

DETAIL
 LOT 4, BLOCK 3
 N.T.S.

5792